

Product Features:

- Step counter up to 99.999 steps
- Easy-to-use
- Reed-contact-system

Applications

Attached to your belt or waistline the pedometer counts your steps when walking, hiking and jogging. This pedometer is designed only for these applications. Do not modify or change the inside of the pedometer.

In General

Hold the case vertically and shake it softly up and down with its display facing towards you. The pendulum inside starts to click gently indicating that it is functioning properly. Incorrect measurements may result under the following conditions:

- 1) If you walk with irregular steps, drag your feet, or walk with sandals
- 2) If the pedometer is subject to additional vibrating motion like standing up, sitting down or jumping up and down.

Button description

RESET to reset the counting steps to zero

Notes for attachment

Attach to your belt or waistline using the clip in an upright, straight position as shown on the right side. Best results are made when you attach the pedometer to your waist in an upright position.

Functions

After attachment of the pedometer, push the [RESET] button for 3 seconds to reset the steps to zero. Now you can start walking or jogging and the pedometer will count your steps.

Battery replacement

When the display becomes dim or is fading, replace the battery with a new LR1130, or equivalent. Open the battery cover and remove the shown screws with a screwdriver. Take off the front side of the housing and remove the old battery (protect the environment by taking empty batteries to authorized disposal stations) Insert the new one into the battery holder (with + side up) and close the battery cover with the screws.

Trouble shooting

Should the display become dim or is fading, please replace the battery.

If the displayed steps are incorrect, check the upright position of the pedometer on your belt or waistline.

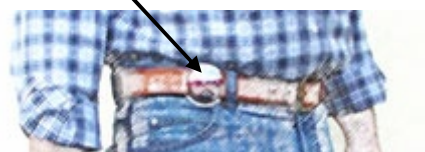
If the pedometer has fallen down, the pendulum could be damaged irreparably. The Warranty does not cover misuse.

Specifications:

- | | |
|------------------|------------------------|
| ● Power source: | Lithium Battery LR1130 |
| ● Battery life : | >6 months |
| ● Product size: | ø 55 mm x 24 mm |
| ● Weight: | approx. 18 g |



Attached position
Reset



screws for battery cover

